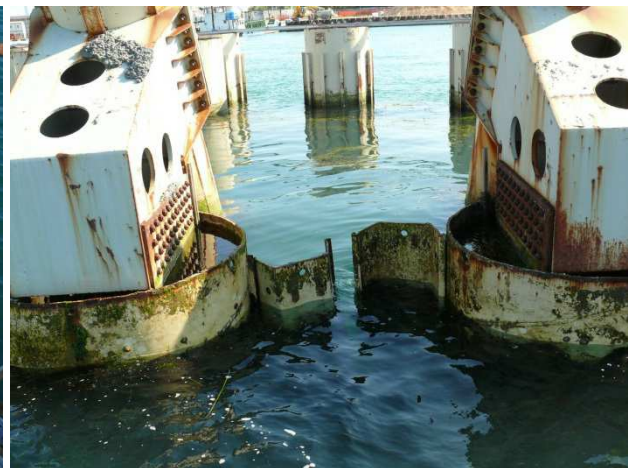
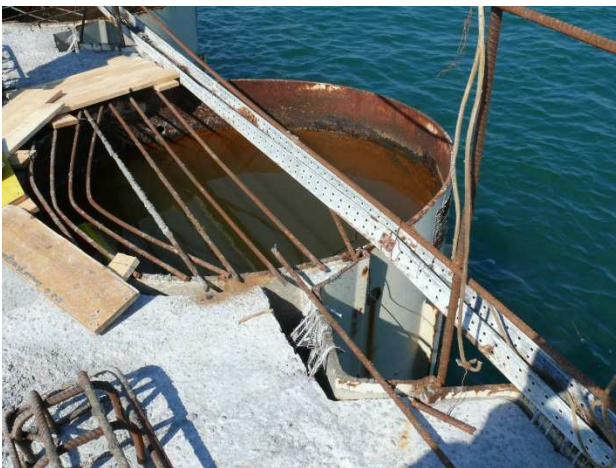


**"HACI EMINE ANA" 23.06.2011  
STRUCK AGAINST PORT INSTALLATION (MOSE)**



On 23<sup>rd</sup> June 2011, the ship "Haci Emine Ana" loaded with a cargo of wheat in bulk, during the manoeuvres aimed at entering into the port of Venice, because of a sudden failure of electrical ship control systems, collided with the outer side of the barrier (MOSE) placed on the south dike of Malamocco harbour entrance.

Despite the various attempts carried out by the ship's crew to prevent the collision with the above referred structure, the casualty could not be avoided.

Following said event, "Haci Emine Ana" incurred in a damage interesting its "forepeak" and, at the same time, the MOSE reported deformations of the structure supporting poles.

We have been instructed by either P&I Club and H&M Underwriters to investigate the incident and protect "Haci Emine Ana" interests before Maritime Authority Inquiry as well as to settle the claims mounted by entities who suffered damages, including the Port Authority.